

## Emergency Action Plan for Humanities Instructional Building EAP

### Contact Persons For This Plan

	Name	Email	Work Phone
<b>Primary</b>	COLIN SCOT ANDREWS	andrewsc@uci.edu	9498242493
<b>Alternate</b>	SANDRA LYNN MUELLER	smuelle@uci.edu	9498246718

### Emergency Assembly Areas Post-Evacuation

Primary	Alternate	Designated Waiting Area(s) If In Need Of Assistance To Evacuate
Grass lawn behind HIB near corner of West Peltason.		Stairwell at top of breezeway.

### Occupants With Emergency Roles

Name	Emergency Role	Home Workgroup
MIRIAM RUVALCABA TORRE	Floor Warden	Philosophy
SARA ELIZABETH CONNOR	Floor Warden	Philosophy
ARIELLE LUCILLA GARCIA	Floor Warden	Office of Grad Studies
SUSAN E. SHOWLER	Floor Warden	Office of Grad Studies
AMY S FUJITANI	Floor Warden	Office of Grad Studies
DAWN ALISON JENISON	Floor Warden	Humanities Core
BINDYA SHANKAR BALIGA	Floor Warden	Comparative Literature & European Languages and Studies
SUZANNE BOLDING	Building Coordinator (Alternate)	Comparative Literature & European Languages and Studies
STEPHANIE LEE ISNALI	Floor Warden	East Asian Languages and Academic English
VERONICA A. PORTAL	Floor Warden	East Asian Languages and Academic English
MICHELLE A HU	Floor Warden	East Asian Languages and Academic English
CAMILLE KE-MIN LAWS	Floor Warden	English
SANDRA LYNN MUELLER	Building Coordinator	English
DEANNA Y NUNEZ	Zone Captain	English
LAURA S. SWENDSON	Zone Captain	Humanities Core
ROBERT ESCALANTE		English Department
JANELLE R PERSINGER		Undergrad Studies

## TABLE OF CONTENTS

A. Purpose Of The Emergency Action Plan.....	3
B. Buildings Covered (in Whole or Part) .....	3
C. Specific Work Area (Within the Above Buildings) Covered By This Plan.....	3
D. Instructions For Reporting Emergencies.....	3
E. Instructions For Evacuation.....	3
F. Instructions For Sheltering In Place.....	4
G. Instructions For Securing In Place .....	5
H. Procedures For Specific Scenarios.....	5
I. List Of Occupants In This Work Area .....	5
J. Occupants With Special Duties During Emergencies .....	5
K. Other Important Information .....	6
Appendices .....	7
Appendix 1: Alarm Systems.....	7
Appendix 2: Org Units That Have Staff In This Work Area.....	7
Appendix 3: Training Requirements .....	7
Appendix 4: Record-Keeping Requirements .....	7
Appendix 5: Contact Persons For This Plan.....	7
Appendix 6: Attachments.....	8

---

Plan History	
<b>Last Modified Date</b>	7/11/2017 2:17:21 PM
<b>Last Modified By</b>	Laura S. Swendson

#### A. Purpose Of The Emergency Action Plan

The Emergency Action Plan (EAP) is a way for your workplace to prepare and plan for a variety of emergency situations, e.g., medical emergencies, citywide disasters; power outages, hazardous chemical spills, fires, bomb threats, a civil disturbance, and earthquakes.

An Emergency Action Plan is required for each Administrative and Academic work space, and should be considered a part of every Department's basic health and safety responsibility. EAPs may be developed for an entire floor or area occupied by multiple departments, divisions, units, or labs; or may be written for a single unit/lab worksite.

It is important for staff to read and understand their work site Emergency Action Plan BEFORE an emergency occurs. Managers should share safety information with faculty, staff, and students; brief all new personnel as they join the department; and POST copies of the Emergency Action Plan in accessible locations. Department Managers are responsible for the annual review and update of their Emergency Action Plan(s).

#### B. Buildings Covered (in Whole or Part)

Building Name	Address Line 1	Address Line 2	Building Coordinator (or Equiv)	Alternate Bldg Coordinator (or Equiv)	Comment
HIB/HUMANITIES INSTRUCTIONAL BUILDING			SANDRA LYNN MUELLER	SUZANNE BOLDING	

#### C. Specific Work Area (Within the Above Buildings) Covered By This Plan

Work Area Covered By This Plan	Large lecture hall HIB 100, HIB 135, HIB 110, HIB 137, English Department, East Asian Languages, Humanities Core, Academic English, Undergrad Studies, Office of Grad Studies, Philosophy, Comparative Literature and European Languages and Studies, conference rooms throughout the building.
Additional Description of Work Area	
Location Tag	Zone 6 - Humanities
Other Location Tag	Humanities
Animal Facilities In This Work Area?	
Animal Facilities Location/Details	

#### D. Instructions For Reporting Emergencies

Employees shall report any fire or other emergency situation to the UCI Police Department by dialing 911 or 949-824-5223. The caller should provide as much information about the emergency as possible, including locations affected, any health and safety issues, missing persons, or other pertinent information.

#### E. Instructions For Evacuation

State law requires occupants to evacuate to a safe location when the fire alarm sounds, or when ordered to do so by emergency response personnel. Floor Wardens and Building Coordinators are responsible for ensuring that employees know their Emergency Assembly Area (EAA) location, and two

## E. Instructions For Evacuation

evacuation routes from the work site location.

Roster sheets listing all employees in the workspace shall be kept in an appropriate and easily-accessible location. They may be kept in multiple locations if necessary to ensure quick access during emergencies. Floor Wardens and Building Coordinators, upon receiving the notice to evacuate, shall carry the roster sheets with them as they guide the evacuation. After the building is evacuated and employees have gathered at the Emergency Assembly Area (EAA), the Floor Wardens and/or Building Coordinators shall take the roll of those gathered. Missing employees shall be promptly reported (a) to on-scene emergency responders (Fire Department, Police, other) and (b) to the Emergency Operations Center or other designated Incident Commander.

- EVACUATE when:
  - A fire and/or life safety emergency occurs,
  - The fire alarm activates (audible and/or visual),
  - Notified to do so by emergency response personnel or Zone Crew members.
- Be aware of all exits from your area and building. Know the routes from your work area.
- When the fire alarm activates or you are told to leave, keep calm, WALK quickly to the nearest marked exit and ask others to do the same. DO NOT RUN.
- DO NOT USE ELEVATORS unless directed to do so.
- ASSIST persons with disabilities, access or functional needs if you are willing and able.
- Notify Zone Crew or emergency personnel if you suspect someone may be trapped in the building.
- Follow instructions given by Zone Crew members in red, yellow, or green vests or emergency personnel.
- Once outside, move to your designated assembly area. Keep streets and walkways clear for emergency vehicles and personnel.
- DO NOT return to an evacuated building until an all clear message is given and you are directed to do so.

**Hazardous Materials Operations and Laboratory Evacuations, if safe, perform the following before evacuating:**

- Shut down all hazardous operations including equipment and energy sources connected to hazardous materials.
- Close all supplies of hazardous materials including compressed gas cylinders.
- Make sure operations are left in a stable state.

<b>Evacuation Route</b>	<b>Primary:</b> Nearest stairwell to assembly area.
	<b>Secondary:</b>
<b>Emergency Assembly Area</b>	<b>Primary:</b> Grass lawn behind HIB near corner of West Peltason.
	<b>Secondary:</b>
<b>Designated Waiting Area(s)</b>	Stairwell at top of breezeway.

## F. Instructions For Sheltering In Place

There may be situations when it's simply best to stay where you are and avoid any uncertainty outside. This can be due to everything from hazardous material releases to fires, explosions or chemical spills.

If a shelter in place order is given employees should follow these procedures to ensure their safety

**How to choose a room to shelter in place:**

- Select a small, interior room, with no or few windows
- Choose a room where exterior doors and windows close completely and can be locked
- It is ideal to have a hard-wired telephone in the room you select (cell phone equipment may be overwhelmed or damaged in an emergency)

**Additional Notes:**

- Lock all available doors
- Turn off all fans, heating and air conditioning systems
- Inspect emergency kits and supplies.
- Tune your AM radio to 1690 for updates on the situation and an all-clear zotALERT message
- Be prepared to improvise and use what you have on hand to seal gaps so that you create a barrier between yourself and any contamination

### G. Instructions For Securing In Place

A Secure-In-Place notification may be issued when the UCI Police Department determines that there is a potential threat to the campus. When notified to Secure-In-Place, initiate action immediately. Take ALL zotALERTS seriously. You will be safest by placing a locked door or other barricade between you and the associated violence or danger.

#### How do I Secure-In-Place?

- REMAIN CALM!
- Find an interior room and lock or barricade the doors.
- If there are other employees, students/visitors with you or in the vicinity, tell them to go to the closest office/classroom/lab/residence hall.
- To minimize vulnerability, turn off lights, silence phones, and draw blinds.
- Move away from doors and windows.
- Move/use furniture to provide added protection.
- Follow instructions from Police, Fire, Zone Crew team members, and other first responders.
- DO NOT leave until an all-clear message is received.

#### What if I am outside?

- If you are outside during a Secure-In-Place emergency you should seek shelter in a nearby building.
- If you are unable to get inside a building, seek nearby shelter, e.g. large trees, walls, cars in a parking lot/garage, away from the danger area (if known).
- Follow instructions from Police, Fire, Zone Crew team members, and other first responders.
- Stay sheltered until an all-clear message is received.

#### What if I am in a classroom or lecture hall?

- Notify class of "Secure-In-Place" order (students, if your professor or TA does not see the alert – notify them).
- Lock or barricade the doors.
- Turn off lights, silence phones, and draw blinds.
- Move away from doors and windows.
- Move/use furniture to provide added protection.
- Follow instructions from Police, Fire, Zone Crew team members, and other first responders.
- DO NOT leave until an all-clear message is received.

### H. Procedures For Specific Scenarios

For additional information on emergency procedures for utility failure, persons in distress, active shooter, hazardous materials incidents, evacuation of persons with disabilities, access or functional needs, medical emergencies, bomb threats, and earthquakes refer to the UCI Emergency Procedures Flip Chart. [http://police.uci.edu/em/UCI\\_EmerProc.pdf](http://police.uci.edu/em/UCI_EmerProc.pdf)

### I. List Of Occupants In This Work Area

Name	Department	Relevant Information?
------	------------	-----------------------

### J. Occupants With Special Duties During Emergencies

Name	Department	Organizer Duties	Duties Pre-Evacuation	Duties Post-Evacuation	Rescue Or Medical Duties
MIRIAM RUVALCABA TORRE	PHILOSOPHY	Floor Warden			
SARA ELIZABETH CONNOR	PHILOSOPHY	Floor Warden			
ARIELLE LUCILLA GARCIA	HUM GRADUATE OFFICE	Floor Warden	CSAR		

#### J. Occupants With Special Duties During Emergencies

Name	Department	Organizer Duties	Duties Pre-Evacuation	Duties Post-Evacuation	Rescue Or Medical Duties
SUSAN E. SHOWLER	HUM GRADUATE OFFICE	Floor Warden	CSAR		
AMY S FUJITANI	HUM GRADUATE OFFICE	Floor Warden			
DAWN ALISON JENISON	CORE COURSE - HUMANITIES	Floor Warden			
BINDYA SHANKAR BALIGA	COMPARATIVE LITERATURE	Floor Warden	CSAR		
SUZANNE BOLDING	COMPARATIVE LITERATURE	Building Coordinator (Alternate)			
STEPHANIE LEE ISNALI	EAST ASIAN LANGUAGES & LIT	Floor Warden			
VERONICA A. PORTAL	EAST ASIAN LANGUAGES & LIT	Floor Warden	CSAR		
MICHELLE A HU	EAST ASIAN LANGUAGES & LIT	Floor Warden			
CAMILLE KE-MIN LAWS	ENGLISH	Floor Warden			
SANDRA LYNN MUELLER	ENGLISH	Building Coordinator			
DEANNA Y NUNEZ	ENGLISH	Zone Captain			
LAURA S. SWENDSON	CORE COURSE - HUMANITIES	Zone Captain	CSAR		
ROBERT ESCALANTE	ENGLISH		CSAR		
JANELLE R PERSINGER	HUMANITIES UNDERGRADUATE		CSAR		

#### K. Other Important Information

No other information at this time.

## Appendices

### Appendix 1: Alarm Systems

Details Of Building Fire Alarm System	4100 Simplex full sprinkler system.
Other Employee Alarm Systems In Building	Intrusion Alarm; Elevator Alarm; Panic Alarm
Details Of Other Employee Alarm Systems	

### Appendix 2: Org Units That Have Staff In This Work Area

HUM - Academic English
HUM - Comparative Literature - European Languages and Studies
HUM - East Asian Languages and Literatures
HUM - English
HUM - Graduate Office
HUM - Humanities Core
HUM - Philosophy
HUM - Undergraduate Study

### Appendix 3: Training Requirements

Before implementing the emergency action plan, the employer shall designate and train a sufficient number of persons to assist in the safe and orderly emergency evacuation of employees.

The employer shall advise each employee of his/her responsibility under the plan at the following times:

- Initially when the plan is developed,
- Whenever the employee's responsibilities or designated actions under the plan change, and
- Whenever the plan is changed. The employer shall review with each employee upon initial assignment those parts of the plan which the employee must know to protect the employee in the event of an emergency. The written plan shall be kept at the workplace and made available for employee review.

### Appendix 4: Record-Keeping Requirements

The written plan shall be kept at the workplace and made available for employee review.

A written training record shall be kept in the workplace. The training record shall include, at minimum, a list of employees trained in the EAP, the date of training for each, and the employee's signature as confirmation. Training records shall be kept and available for a minimum of ten years.

### Appendix 5: Contact Persons For This Plan

	Name	Email	Work Phone	Cell Phone
--	------	-------	------------	------------

**Appendix 5: Contact Persons For This Plan**

	Name	Email	Work Phone	Cell Phone
<b>Primary</b>	COLIN SCOT ANDREWS	andrewsc@uci.edu	9498242493	(714) 623-9189
<b>Alternate</b>	SANDRA LYNN MUELLER	slmuelle@uci.edu	9498246718	(714) 337-1448

**Appendix 6: Attachments**

Attachment Name	Description
HIB people.xls	
Humanities Instructional Bldg.pdf	



Greenberg	Sean	Philosophy	Humanities Instructional Building
Helmreich	Jeffrey	Philosophy	Humanities Instructional Building
Perin	Casey	Philosophy	Humanities Instructional Building
Kent	Bonnie	Philosophy	Humanities Instructional Building
Bernecker	Sven	Philosophy	Humanities Instructional Building
Schwab	Martin	Philosophy	Humanities Instructional Building
Fiocco	M. Oreste	Philosophy	Humanities Instructional Building
Connor	Sara	Philosophy	Humanities Instructional Building
Gilbert	Margaret	Philosophy	Humanities Instructional Building
Torres	Miriam	Philosophy	Humanities Instructional Building
James	Aaron	Philosophy	Humanities Instructional Building
Bencivenga	Ermanno	Philosophy	Humanities Instructional Building
Smith	David	Philosophy	Humanities Instructional Building
Persinger	Janelle	OOD Undergraduate Advising	Humanities Instructional Building
Walker	Ashlee	OOD Undergraduate Advising	Humanities Instructional Building
Chen	Yong	OOD Undergraduate Advising	Humanities Instructional Building
Payne-Miller	Lisa	OOD Undergraduate Advising	Humanities Instructional Building
Green	Erica	OOD Undergraduate Advising	Humanities Instructional Building
Pinney	Brittney	OOD Undergraduate Advising	Humanities Instructional Building
Hinojosa	Arielle	OOD Graduate Advising	Humanities Instructional Building
Horn	Chad	English	Humanities Instructional Building
Fujitani	Amy	OOD Graduate Advising	Humanities Instructional Building
Showler	Susan	OOD Graduate Advising	Humanities Instructional Building
Bolding	Suzanne	Comparative Literature	Humanities Instructional Building
Beauchamp	Tamara	Humanities Core Course	Humanities Instructional Building
Berghof	Alice	Humanities Core Course	Humanities Instructional Building
Berghof	Oliver	Humanities Core Course	Humanities Instructional Building
Buhanan	Kurt	Humanities Core Course	Humanities Instructional Building
Connell	Christine	Humanities Core Course	Humanities Instructional Building
Fogli	Giovanna	Humanities Core Course	Humanities Instructional Building
Frouzesh	Sharareh	Humanities Core Course	Humanities Instructional Building
Garceau	Benjamin	Humanities Core Course	Humanities Instructional Building
Herrmann	Amalia	Humanities Core Course	Humanities Instructional Building
Jensen	Ian	Humanities Core Course	Humanities Instructional Building
Kleszyk	Louise	Humanities Core Course	Humanities Instructional Building
Morse	Susan	Humanities Core Course	Humanities Instructional Building
Shapiro	Brendan	Humanities Core Course	Humanities Instructional Building
Short	Gretchen	Humanities Core Course	Humanities Instructional Building
Siakel	Daniel	Humanities Core Course	Humanities Instructional Building
Sweeney	Erin	Humanities Core Course	Humanities Instructional Building
Walsh	Katharine	Humanities Core Course	Humanities Instructional Building
Jenison	Dawn	Humanities Core Course	Humanities Instructional Building
Swendson	Laura	Humanities Core Course	Humanities Instructional Building
Lazo	Rodrigo	Humanities Core Course	Humanities Instructional Building
Castillo	Larisa	Humanities Core Course	Humanities Instructional Building
Castillo	Larissa	Humanities Core Course	Humanities Instructional Building
Noland	Carrie	European Languages and Stud	Humanities Instructional Building
Klein	Laura	European Languages and Stud	Humanities Instructional Building
Morisi	Eve	European Languages and Stud	Humanities Instructional Building
Mijalski	Maryse	European Languages and Stud	Humanities Instructional Building

Mijalski	Maryse	European Languages and Stud Humanities Instructional Building	
Hamber	Franca	European Languages and Stud Humanities Instructional Building	
Hamber	Franca	European Languages and Stud Humanities Instructional Building	
Mjolsness	Lora	European Languages and Stud Humanities Instructional Building	
Mjolsness	Lora	European Languages and Stud Humanities Instructional Building	
Biendarra	Anke	European Languages and Stud Humanities Instructional Building	
Smith	John	European Languages and Stud Humanities Instructional Building	
Evers	Kai	European Languages and Stud Humanities Instructional Building	
Rafi	Mohammad	Humanities Core Course	Humanities Instructional Building
Farbman	Herschel	European Languages and Stud Humanities Instructional Building	
Levine	Glenn	European Languages and Stud Humanities Instructional Building	
Hart	Gail	European Languages and Stud Humanities Instructional Building	
Guthrie	Elizabeth	European Languages and Stud Humanities Instructional Building	
Moinzadeh	Irاندokht	European Languages and Stud Humanities Instructional Building	
Zlatina	Sandalska	European Languages and Stud Humanities Instructional Building	
Schlossman	Beryl	Comparative Literature	Humanities Instructional Building
Abbas	Ackbar	Comparative Literature	Humanities Instructional Building
Baliga	Bindya	Comparative Literature	Humanities Instructional Building
Layton	Heather	Comparative Literature	Humanities Instructional Building
Terada	Rei	Comparative Literature	Humanities Instructional Building
Schwab	Gabriele	Comparative Literature	Humanities Instructional Building
Gelley	Alexander	Comparative Literature	Humanities Instructional Building
Schlichter	Annette	Comparative Literature	Humanities Instructional Building
Amiran	Eyal	Comparative Literature	Humanities Instructional Building
Johnson	Adriana	Comparative Literature	Humanities Instructional Building
Caldwell	Barbara	Comparative Literature	Humanities Instructional Building
wa Thiong'o	Ngugi	Comparative Literature	Humanities Instructional Building
Chieng	Chieh	English	Humanities Instructional Building
Depaul	Amy	English	Humanities Instructional Building
Eason	Loren	English	Humanities Instructional Building
Keeler	Charlene	English	Humanities Instructional Building
Sims	Richard	English	Humanities Instructional Building
Lee	Jerry Won	English	Humanities Instructional Building
Andreasen	Michael	English	Humanities Instructional Building
Fischer	Anita	English	Humanities Instructional Building
McMichael	James	English	Humanities Instructional Building
Gerstler	Amy	English	Humanities Instructional Building
Latiolais	Michelle	English	Humanities Instructional Building
Gurney	Ryan	English	Humanities Instructional Building
Carlson	Ronald	English	Humanities Instructional Building
Queen	Bradley	English	Humanities Instructional Building
Queen	Bradley	English	Humanities Instructional Building
Collins	Rachael	English	Humanities Instructional Building
Gray	Rebecca	English	Humanities Instructional Building
Gullaba	Alberto	English	Humanities Instructional Building
Lerner	Scott	English	Humanities Instructional Building
Davis	Rebecca	English	Humanities Instructional Building
Spencer	Paul	Academic English	Humanities Instructional Building
Cruz	Cassandra	Academic English	Humanities Instructional Building
Jerome	Amanda	Academic English	Humanities Instructional Building

Jones	Rose	Academic English	Humanities Instructional Building
Karkafi	Larisa	Academic English	Humanities Instructional Building
Lee	Sei	Academic English	Humanities Instructional Building
Ludwig	Jacob	Academic English	Humanities Instructional Building
Qureshi	Aziz-Ul-Haq	Academic English	Humanities Instructional Building
Ruggiero	Gina	Academic English	Humanities Instructional Building
Russell	Vanessa	Academic English	Humanities Instructional Building
Stern	Heather	Academic English	Humanities Instructional Building
Striedter	Anna	Academic English	Humanities Instructional Building
Thiercof	Debra	Academic English	Humanities Instructional Building
Vimuttinan	Catherine	Academic English	Humanities Instructional Building
Wolff	Brandon	Academic English	Humanities Instructional Building
Zayed	Omaima	Academic English	Humanities Instructional Building
Gross	Daniel	English	Humanities Instructional Building
Tucker	Irene	English	Humanities Instructional Building
Keizer	Arlene	English	Humanities Instructional Building
Jackson	Virginia	English	Humanities Instructional Building
Reed	B.	English	Humanities Instructional Building
Davis	Susan	English	Humanities Instructional Building
Davis	Susan	English	Humanities Instructional Building
Roberts	Hugh	English	Humanities Instructional Building
Allen	Elizabeth	English	Humanities Instructional Building
Newman	Jane	Comparative Literature	Humanities Instructional Building
Flores	Ryuko	East Asian Languages and Lite	Humanities Instructional Building
Nagai	Ayako	East Asian Languages and Lite	Humanities Instructional Building
Sithiamnuai	Eiko	East Asian Languages and Lite	Humanities Instructional Building
Lewis	Jayne	English	Humanities Instructional Building
Delany-Ullman	Lorene	English	Humanities Instructional Building
Dubey	Jaya	English	Humanities Instructional Building
McKay	Lowell	English	Humanities Instructional Building
Riggs	Hidemi	East Asian Languages and Lite	Humanities Instructional Building
Henderson	Andrea	English	Humanities Instructional Building
Corwin	Miles	English	Humanities Instructional Building
Helfer	Rebeca	English	Humanities Instructional Building
Hayasaki	Erika	English	Humanities Instructional Building
Izenberg	Oren	English	Humanities Instructional Building
Brauer	Emily	English	Humanities Instructional Building
Palmquist	Tira	English	Humanities Instructional Building
Lewin	Katrina	English	Humanities Instructional Building
Allen	Bobbie	English	Humanities Instructional Building
Ellis	Tagert	English	Humanities Instructional Building
Keeperman	Jonathan	English	Humanities Instructional Building
Way	Jacqueline	English	Humanities Instructional Building
Haas	Lynda	English	Humanities Instructional Building
Siegel	Barry	English	Humanities Instructional Building
Wilentz	Amy	English	Humanities Instructional Building
Escalante	Robert	English	Humanities Instructional Building
Laws	Camille	English	Humanities Instructional Building
Nguyen	Liz	English	Humanities Instructional Building
Mueller	Sandra	English	Humanities Instructional Building

Kinjo	Patricia	English	Humanities Instructional Building
Trimnell	Adriane	English	Humanities Instructional Building
Nunez	Dee Dee	English	Humanities Instructional Building
Harries	Martin	English	Humanities Instructional Building
Hollowell	John	English	Humanities Instructional Building
Langdon	Lance-David	English	Humanities Instructional Building
Scruggs	Bert	East Asian Languages and Lite	Humanities Instructional Building
Choe	Hyunju	East Asian Languages and Lite	Humanities Instructional Building
Hyun	Hyun	East Asian Languages and Lite	Humanities Instructional Building
Lee	Jung	East Asian Languages and Lite	Humanities Instructional Building
Chen	Jessica	East Asian Languages and Lite	Humanities Instructional Building
Petersen	Ying	East Asian Languages and Lite	Humanities Instructional Building
Portal	Veronica	East Asian Languages and Lite	Humanities Instructional Building
Hu	Michelle	East Asian Languages and Lite	Humanities Instructional Building
Isnali	Stephanie	East Asian Languages and Lite	Humanities Instructional Building
Hsieh	Ruohmei	East Asian Languages and Lite	Humanities Instructional Building
Suh	Serk-Bae	East Asian Languages and Lite	Humanities Instructional Building
Choi	Chungmoo	East Asian Languages and Lite	Humanities Instructional Building
Huang	Martin	East Asian Languages and Lite	Humanities Instructional Building
Ying	Hu	East Asian Languages and Lite	Humanities Instructional Building
Fujii	Jim	East Asian Languages and Lite	Humanities Instructional Building
Klein	Susan	East Asian Languages and Lite	Humanities Instructional Building
Lenz	Karen	Academic English	Humanities Instructional Building
Sosa	Christie	Academic English	Humanities Instructional Building
Kim	Caroline	Academic English	Humanities Instructional Building
Aguirre	Melissa	Academic English	Humanities Instructional Building
Scarcella	Robin	Academic English	Humanities Instructional Building

69		greenbes	greenbes@uci.edu	Core Faculty
71		jhelmrei	jhelmrei@uci.edu	Core Faculty
73		cperin	cperin@uci.edu	Core Faculty
75		bkent	bkent@uci.edu	Core Faculty
77	(949) 824-3896	sberneck	s.bernecker@uci.edu	Core Faculty
79		mschwab	mschwab@uci.edu	Emeriti Faculty
92		mfiocco	mfiocco@uci.edu	Core Faculty
93	(949) 824-8457	sdconnor	sdconnor@uci.edu	Staff
94	(949) 824-8520	mpgilber	margaret.gilbert@uci.edu	Core Faculty
95	(949) 824-6525	mruvalc2	mruvalc2@uci.edu	Staff
96		ajjames	aaron.james@uci.edu	Core Faculty
98	(949) 824-6527	ebencive	ebencive@uci.edu	Core Faculty
99	(949) 824-6546	dwsmith	dwsmith@uci.edu	Core Faculty
150	(949) 824-5132	jpersing	jpersing@uci.edu	Staff
152	(949) 824-5132	ashleemw	ashleemw@uci.edu	Staff
157	(949) 824-5557	y3chen	y3chen@uci.edu	Dean
161	(949) 824-5132	lpaynemi	lpaynemi@uci.edu	Staff
167	(949) 824-5132	egggreen	erica.green@uci.edu	Staff
170	(949) 824-5132	breuter	brittney.pinney@uci.edu	Staff
172	(949) 824-6441	hinojosa	hinojosa@uci.edu	Staff
174	(949) 824-6712	chorn	chorn@uci.edu	Staff
176	(949) 824-4303	afujitan	amy.fujitani@uci.edu	Staff
179	(949) 824-6720	showler	showler@uci.edu	Staff
184	(949) 824-6338	smboldin	smboldin@uci.edu	Staff
185	(949) 824-1964	TBEAUCHA	tbeaucha@uci.edu	Visiting Assistant Professor
185	(949) 824-1964	ABERGHOF	aberghof@uci.edu	Lecturer
185	(949) 824-1964	OGB	ogb@uci.edu	Lecturer
185	(949) 824-1964	KBUHANAN	kbuhanan@uci.edu	Lecturer
185	(949) 824-1964	CONNELL	connellc@uci.edu	Lecturer
185	(949) 824-1964	GFOGLI	gfogli@uci.edu	Lecturer
185	(949) 824-1964	frouzesh	frouzesh@uci.edu	Lecturer
185	(949) 824-1964	bgarceau	bgarceau@uci.edu	Lecturer
185	(949) 824-1964	AHERRMAN	a.herrmann@uci.edu	Lecturer
185	(949) 824-1964	ijensen		Lecturer
185	(949) 824-1964	LKLESZYK	lkleszyk@uci.edu	Lecturer
185	(949) 824-1964	SMORSE	smorse@uci.edu	Lecturer
185	(949) 824-1964	SHAPIROB		Lecturer
185	(949) 824-1964	GKSHORT	gkshort@uci.edu	Lecturer
185		dsiakel	dsiakel@uci.edu	Lecturer
185	(949) 824-1964	sweeney	sweeney@uci.edu	Lecturer
185	(949) 824-1964	KWALSH	kwalsh@uci.edu	Lecturer
185	(949) 824-1964	djenison	djenison@uci.edu	Staff
185	(949) 824-6408	swendson	laura.s@uci.edu	Staff
186	(949) 824-4363	rlazo	rlazo@uci.edu	Staff
188	(949) 824-8130	LTOKMAKO	larisa.castillo@uci.edu	Writing Director
188	(949) 824-8130	ltokmako	ltokmako@uci.edu	Core Faculty
204	(949) 824-6406	cjnoland	cjnoland@uci.edu	Core Faculty
205		LKLEINTO	lkleinto@uci.edu	Lecturer
206	(949) 824-6406	emorisi	emorisi@uci.edu	Emeriti Faculty
207	(949) 824-6406	mjmijals	mjmijals@uci.edu	Core Faculty

207	(949) 824-6406	MJMIJALS	mjmijals@uci.edu	Lecturer
209	(949) 824-6406	fhamber	fhamber@uci.edu	Core Faculty
209	(949) 824-6406	FHAMBER	fhamber@uci.edu	Lecturer
211	(949) 824-6406	lora	lora@uci.edu	Core Faculty
211	(949) 824-6406	LORA	lora@uci.edu	Lecturer
212	(949) 824-6406	abiendar	abiendar@uci.edu	Core Faculty
213	(949) 824-6406	jhsmith	jhsmith@uci.edu	Core Faculty
214	(949) 824-6406	kevers	kevers@uci.edu	Core Faculty
216		mrafi	mrafi@uci.edu	Lecturer
218	(949) 824-6406	hfarbman	hfarbman@uci.edu	Core Faculty
225	(949) 824-6406	glevine	glevine@uci.edu	Core Faculty
229	(949) 824-6339	gkhart	gkhart@uci.edu	Emeriti Faculty
243		EGUTHRIE	eguthrie@uci.edu	Lecturer
243		imoinzad	imoinzad@uci.edu	Lecturer
243		zlatina	zlatina@uci.edu	Lecturer
250	(949) 824-6406	bschloss	bschloss@uci.edu	Core Faculty
252	(949) 824-6406	mabbas	mabbas@uci.edu	Core Faculty
266	(949) 824-7968	bbaliga	bbaliga@uci.edu	Staff
269	(949) 824-6635	hlayton	hlayton@uci.edu	Staff
270	(949) 824-6406	terada	terada@uci.edu	Core Faculty
271	(949) 824-6406	gmschwab	gmschwab@uci.edu	Core Faculty
273	(949) 824-6406	agelley	agelley@uci.edu	Emeriti Faculty
274	(949) 824-6406	aschlich	aschlich@uci.edu	Core Faculty
275	(949) 824-6406	amiran	amiran@uci.edu	Core Faculty
276	(949) 824-6406	adrianaj	adriana.johnson@uci.edu	Core Faculty
278	(949) 824-6722	bacaldwe	barbara.caldwell@uci.edu	Staff
279	(949) 824-6722	ngugi	ngugi@uci.edu	Core Faculty
300	(949) 824-6712	CCHIENG	cchieng@uci.edu	Lecturer
300	(949) 824-6712	DEPAULA	depaula@uci.edu	Lecturer
300	(949) 824-6717	LEASON	leason@uci.edu	Lecturer
300		CKEELER	ckeeler@uci.edu	Lecturer
300	(949) 824-6717	SIMSR	simsr@uci.edu	Lecturer
301		jwl	jwl@uci.edu	Core Faculty
304	(949) 824-6712	MANDREAS	mandreas@uci.edu	Lecturer
304	(949) 824-6712	afischer	afischer@uci.edu	Lecturer
306	(949) 824-6241	jlmcmich	jlmcmich@uci.edu	Emeriti Faculty
308	(949) 824-2984	agerstle	agerstle@uci.edu	Core Faculty
309	(949) 824-3064	latiolai	latiolai@uci.edu	Core Faculty
310		rgurney	rgurney@uci.edu	Core Faculty
312	(949) 824-0342	rcarlson	ron.carlson@uci.edu	Core Faculty
314		bqueen	bradley.queen@uci.edu	Lecturer
314	(949) 824-4113	bqueen	bradley.queen@uci.edu	Core Faculty
316	(949) 824-6712	collins2	collins2@uci.edu	Lecturer
316	(949) 824-6712	rcgray	rcgray@uci.edu	Lecturer
316	(949) 824-6717	AGULLABA	agullaba@uci.edu	Lecturer
316		slerner1	slerner1@uci.edu	Lecturer
316	(949) 824-8529	radavis	radavis@uci.edu	Core Faculty
318		pjspence	pjspence@uci.edu	Lecturer
335		chummel1	c.cruz@uci.edu	Lecturer
335		AJEROME	ajerome@uci.edu	Lecturer

335		RJONES	rjones@uci.edu	Lecturer
335		lkarkafi	lkarkafi@uci.edu	Lecturer
335		seiyl	seiyl@uci.edu	Lecturer
335		jludwig1	jludwig1@uci.edu	Lecturer
335		azizq	azizq@uci.edu	Lecturer
335		gruggier	gruggier@uci.edu	Lecturer
335		vlrussel	v.russell@uci.edu	Lecturer
335		hstern	hstern@uci.edu	Lecturer
335	(949) 824-6781	ASTRIEDT	astriedt@uci.edu	Lecturer
335		dthierco	dthierco@uci.edu	Lecturer
335		cvimutti	cathy.v@uci.edu	Lecturer
335		wolffb	wolffb@uci.edu	Lecturer
335		OZAYED	ozayed@uci.edu	Lecturer
346	(949) 824-1037	dgross	dgross@uci.edu	Core Faculty
348	(949) 824-6744	irenet	irenet@uci.edu	Core Faculty
366	(949) 824-0718	akeizer	akeizer@uci.edu	Core Faculty
368	(949) 824-4107	vwjackso	vwjackso@uci.edu	Core Faculty
369	(949) 551-6750	LREED	lreed@uci.edu	Lecturer
370		SEDAVIS	sedavis@uci.edu	Lecturer
370	(949) 824-5985	sedavis	sedavis@uci.edu	Core Faculty
372	(949) 824-6640	hroberts	hroberts@uci.edu	Core Faculty
373	(949) 824-6404	eallen	eallen@uci.edu	Core Faculty
374	(949) 824-6406	jnewman	jnewman@uci.edu	Core Faculty
375	(949) 824-2813	floresra	floresra@uci.edu	Lecturer
375	(949) 824-2813	AYAKO	ayako@uci.edu	Lecturer
375	(949) 824-2813	ESITHIAM	esithiam@uci.edu	Lecturer
376	(949) 824-6875	jelewis	jelewis@uci.edu	Core Faculty
378	(949) 824-6712	LDELANYU	ldelanyu@uci.edu	Lecturer
378	(949) 824-6712	JDUBEY	jdubey@uci.edu	Lecturer
378		LMCKAY	lmckay@uci.edu	Lecturer
379		hriggs	hriggs@uci.edu	Lecturer
400	(949) 824-9829	akhender	akhender@uci.edu	Core Faculty
401	(949) 824-5049	corwinm	corwinm@uci.edu	Core Faculty
402	(949) 824-1883	rhelfer	rhelfer@uci.edu	Core Faculty
403	(949) 824-9245	ehayasak	ehayasak@uci.edu	Core Faculty
404	(949) 824-4215	oizenber	o.izenberg@uci.edu	Core Faculty
405	(949) 824-6712	EBRAUER	ebrauer@uci.edu	Lecturer
405	(949) 824-5355	tpalmqui	tpalmqui@uci.edu	Core Faculty
406		klewin	klewin@uci.edu	Lecturer
406	(949) 824-6517	allenbj	allenbj@uci.edu	Core Faculty
407		TELLIS	tellis@uci.edu	Lecturer
407	(949) 824-6717	jkeeperm	jkeeperm@uci.edu	Lecturer
407	(949) 824-6712	JYWAY	jyway@uci.edu	Lecturer
407	(949) 824-4518	lhaas	lhaas@uci.edu	Core Faculty
408	(949) 824-3023	bsiegel	bsiegel@uci.edu	Core Faculty
410	(949) 824-3745	awilentz	awilentz@uci.edu	Core Faculty
420	(949) 824-9692	escalanr	escalanr@uci.edu	Staff
420	(949) 824-6717	claws	claws@uci.edu	Staff
421	(949) 824-0452	ebnguyen	ebnguyen@uci.edu	Staff
423	(949) 824-6718	slmuelle	slmuelle@uci.edu	Staff

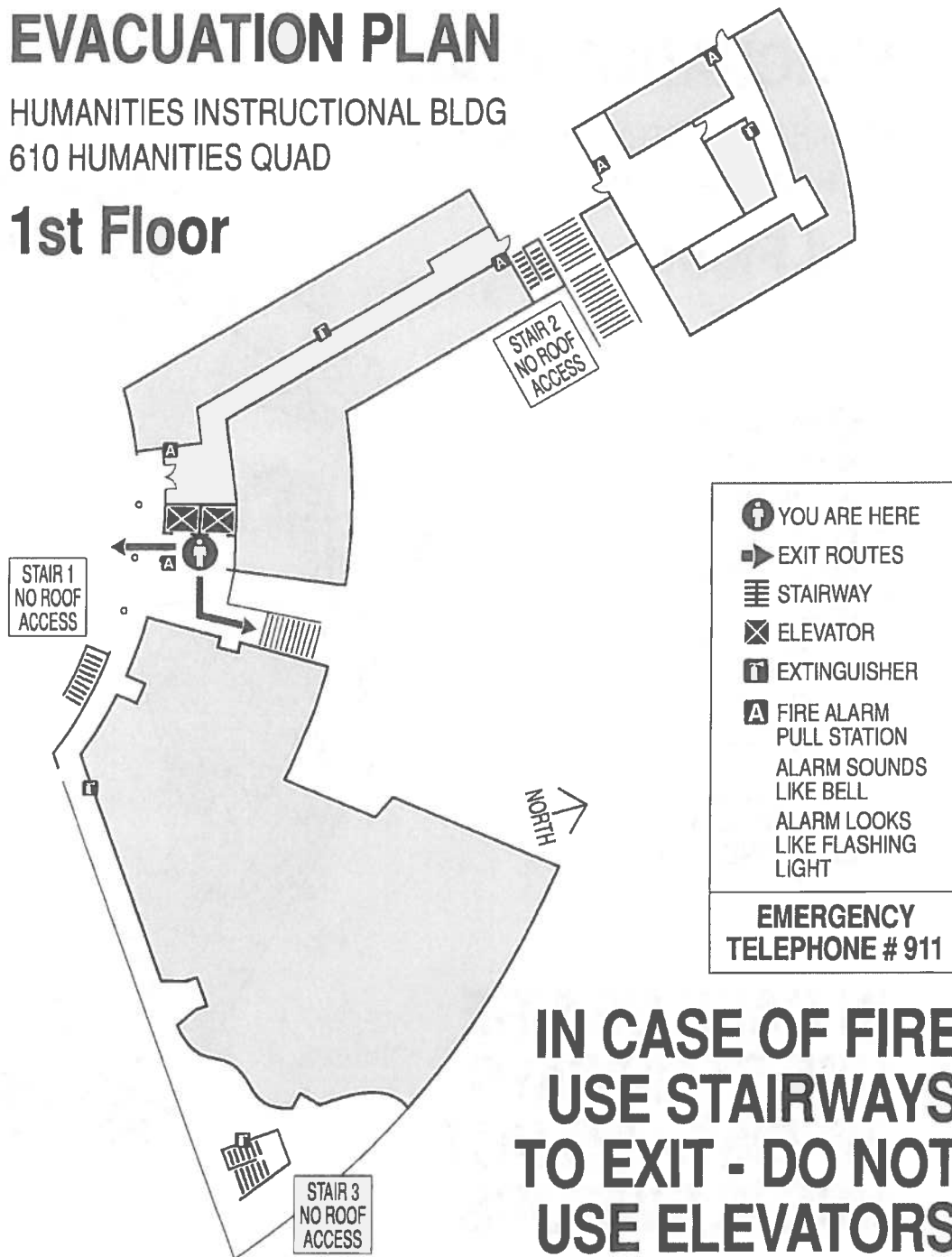
425	(949) 824-4857	pkinjo	pkinjo@uci.edu	Staff
427	(949) 824-5323	atrimnel	atrimnel@uci.edu	Staff
429	(949) 824-6713	dynunez	dynunez@uci.edu	Staff
431	(949) 824-6715	mharries	martin.harries@uci.edu	Core Faculty
435	(949) 824-6712	jwhollow	jwhollow@uci.edu	Lecturer
435		llangdon	llangdon@uci.edu	Lecturer
446	(949) 824-1603	bscruggs	bscruggs@uci.edu	Core Faculty
448	(949) 824-2152	HYUNJUC	hyunjuc@uci.edu	Lecturer
448	(949) 824-2152	HHYUN	hhyun@uci.edu	Lecturer
448	(949) 824-2152	JLEE100	jlee100@uci.edu	Lecturer
452	(949) 824-2227	HJLIU	hjliu@uci.edu	Lecturer
452	(949) 824-2227	YYPETSEN	ypypetsen@uci.edu	Lecturer
453	(949) 824-0594	vportal	vportal@uci.edu	Staff
459	(949) 824-2165	mahu	mahu@uci.edu	Staff
461	(949) 824-1601	sisnali	sisnali@uci.edu	Staff
466	(949) 824-2227	RHSIEH	rhsieh@uci.edu	Lecturer
472	(949) 824-5916	suhsb	suhsb@uci.edu	Core Faculty
473	(949) 824-7572	cchoi	cchoi@uci.edu	Core Faculty
474	(949) 824-3122	mwhuang	mwhuang@uci.edu	Core Faculty
476	(949) 824-6312	huying	huying@uci.edu	Core Faculty
477	(949) 824-3121	jafujii	jafujii@uci.edu	Emeriti Faculty
479	(949) 824-8165	sbklein	sbklein@uci.edu	Core Faculty
335C		klenz	klenz@uci.edu	Lecturer
335C		csosa	csosa@uci.edu	Lecturer
335A	(949) 824-0401	ckim35	ckim35@uci.edu	Staff
335D	(949) 824-6781	aguirrm1	aguirrm1@uci.edu	Staff
335E	(949) 824-7305	rcscarce	rcscarce@uci.edu	Core Faculty



# EVACUATION PLAN

HUMANITIES INSTRUCTIONAL BLDG  
610 HUMANITIES QUAD

## 1st Floor



4311 WILSHIRE BL #112 TEL (323) 549-4270  
LOS ANGELES CA 90010 FAX (323) 549-9571

**Proof / Sign # 8G-1-1**

1/2 FULL SIZE - MAY 15TH 2008

# EVACUATION PLAN

HUMANITIES INSTRUCTIONAL BLDG  
610 HUMANITIES QUAD

## 2nd Floor

**YOU ARE HERE**

**EXIT ROUTES**

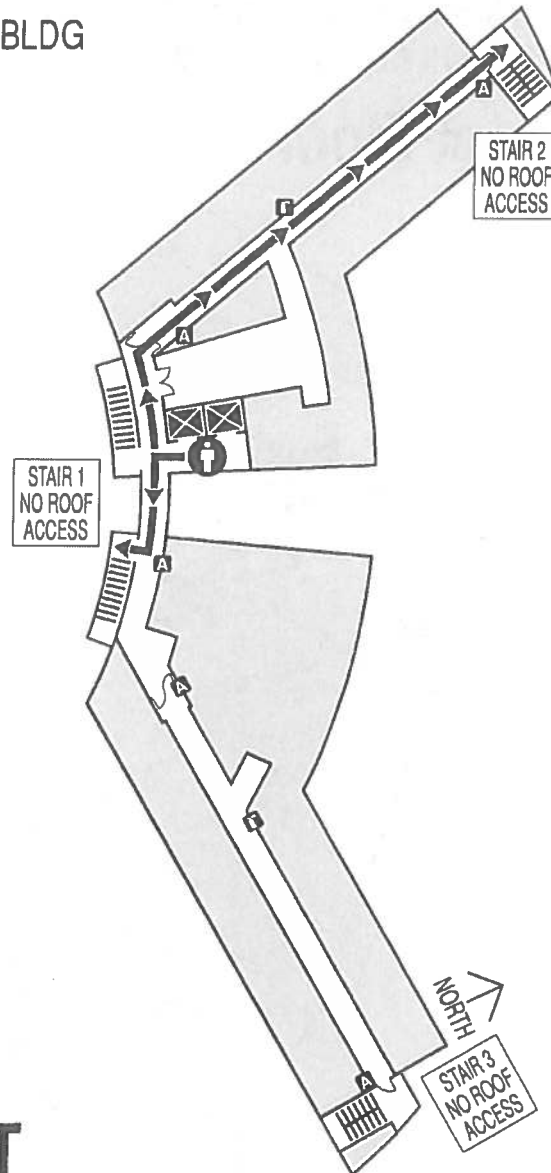
**STAIRWAY**

**ELEVATOR**

**EXTINGUISHER**

**FIRE ALARM PULL STATION**  
ALARM SOUNDS LIKE BELL  
ALARM LOOKS LIKE FLASHING LIGHT

**EMERGENCY TELEPHONE # 911**



**IN CASE OF FIRE  
USE STAIRWAYS  
TO EXIT - DO NOT  
USE ELEVATORS**



4311 WILSHIRE BL #112 TEL (323) 649-4270  
LOS ANGELES CA 90010 FAX (323) 649-9070






**Proof / Sign # 8G-2-1**

1/2 FULL SIZE - MAY 15TH 2008

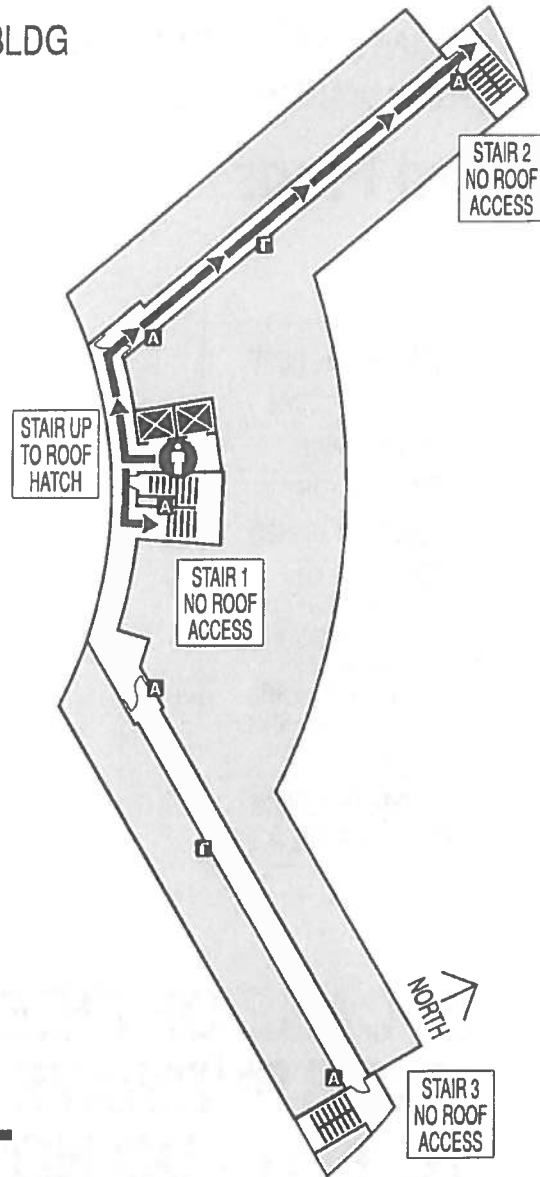
# EVACUATION PLAN

HUMANITIES INSTRUCTIONAL BLDG  
610 HUMANITIES QUAD

## 4th Floor

	YOU ARE HERE
	EXIT ROUTES
	STAIRWAY
	ELEVATOR
	EXTINGUISHER
	FIRE ALARM PULL STATION
	ALARM SOUNDS LIKE BELL
	ALARM LOOKS LIKE FLASHING LIGHT
<b>EMERGENCY TELEPHONE # 911</b>	

**IN CASE OF FIRE  
USE STAIRWAYS  
TO EXIT - DO NOT  
USE ELEVATORS**



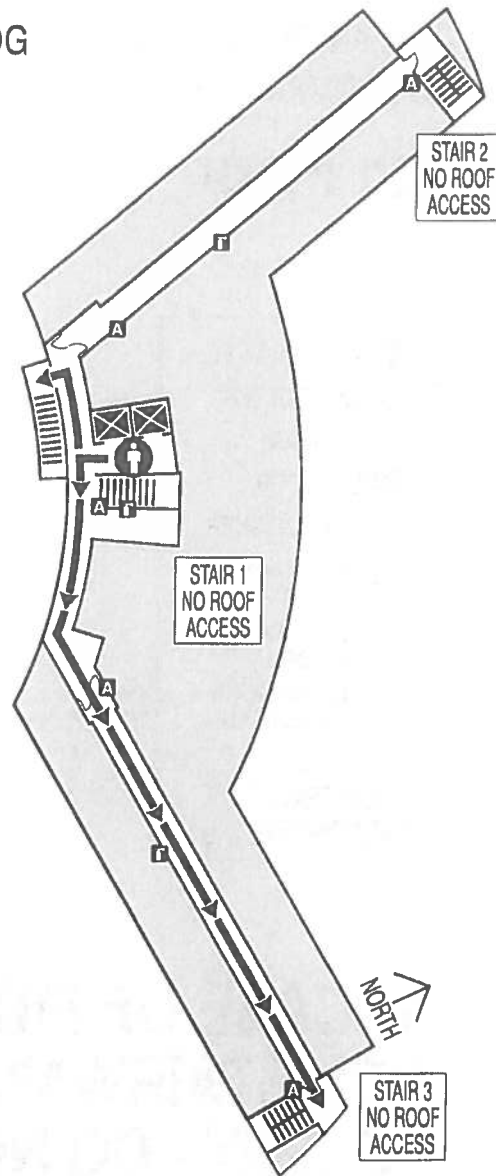
# EVACUATION PLAN

HUMANITIES INSTRUCTIONAL BLDG  
610 HUMANITIES QUAD

## 3rd Floor

**i** YOU ARE HERE  
➡ EXIT ROUTES  
≡ STAIRWAY  
⊠ ELEVATOR  
f EXTINGUISHER  
A FIRE ALARM  
PULL STATION  
ALARM SOUNDS  
LIKE BELL  
ALARM LOOKS  
LIKE FLASHING  
LIGHT

**EMERGENCY  
TELEPHONE # 911**



**IN CASE OF FIRE  
USE STAIRWAYS  
TO EXIT - DO NOT  
USE ELEVATORS**



CALIFORNIA  
CONTRACT  
COMMERCIAL DESIGNS

4311 WILSHIRE BL #112 TEL (323) 549-4270  
LOS ANGELES CA 90010 FAX (323) 549-9070

**Proof / Sign # 8G-3-1**

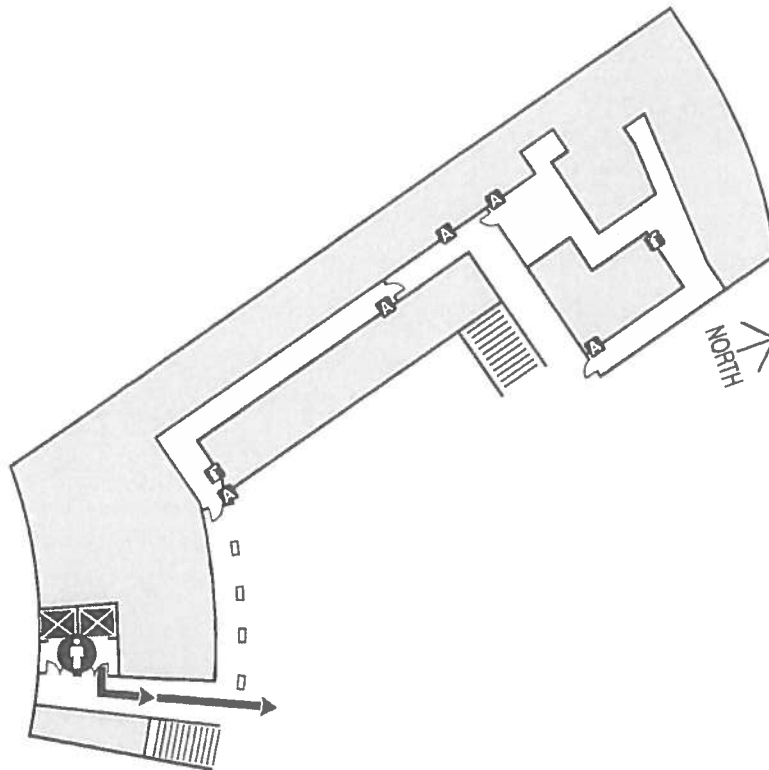
1/2 FULL SIZE - MAY 15TH 2008

# EVACUATION PLAN

HUMANITIES INSTRUCTIONAL BLDG

## Basement

610 HUMANITIES QUAD



**IN CASE OF FIRE  
USE STAIRWAYS  
TO EXIT - DO NOT  
USE ELEVATORS**

- |              |                                 |
|--------------|---------------------------------|
| YOU ARE HERE | FIRE ALARM PULL STATION         |
| EXIT ROUTES  | ALARM SOUNDS LIKE BELL          |
| STAIRWAY     | ALARM LOOKS LIKE FLASHING LIGHT |
| ELEVATOR     |                                 |
| EXTINGUISHER |                                 |

**EMERGENCY TELEPHONE # 911**



CALIFORNIA  
CONTRACT  
COMMERCIAL DESIGNS

4311 WILSHIRE BL #112 TEL (323) 549-4270  
LOS ANGELES CA 90010 FAX (323) 549-9070

**Proof / Sign # 8G-B-1**

1/2 FULL SIZE - MAY 15TH 2008

